

The background of the slide is a photograph of the ESO Very Large Telescope (VLT) dome. The dome is a large, curved structure with a complex internal truss system. It is partially open, revealing the internal structure and a smaller telescope structure inside. The scene is set at sunset or sunrise, with a bright sun low on the horizon to the right, casting a warm glow over the landscape. The sky is a mix of blue and orange. The foreground shows the base of the dome and some surrounding terrain.

**Presentation of**



**ESO Industry Day Italy 2012**



**Design, Production, Erection, Maintenance**



# Where we are...

Poland



**DEMONT**  
POLSKA SP. Z O.O.

Lipno Offices &  
Workshop  
Tot. Surface: 76.497 m<sup>2</sup>  
(10.480 m<sup>2</sup> in-house)

Romania



**DEMONT**  
EAST-EUROPE S.R.L.

Bucarest Offices  
Surface: 100 m<sup>2</sup>

Bosnia H.



**DEMONT**  
BH D.O.O.

Bihac

Bihac Offices  
Surface: 30 m<sup>2</sup>

Libya



**DEMONT LIBYA**  
ديمونت ليبيا

Tripoli Offices  
Surface: 150 m<sup>2</sup>

## Italy

Millesimo  
Headquarter &  
Workshop

Tot. Surface: 26.550  
m<sup>2</sup>  
(13.350 m<sup>2</sup> in-  
house)

Genova Offices  
Surface: 580 m<sup>2</sup>

Milano  
Offices

Surf.: 1.000  
m<sup>2</sup>



Reggio Emilia  
Offices

Monfalcone Offices & Workshop

Tot. Surface: 23.000 m<sup>2</sup> (11.000 m<sup>2</sup> in-  
house)

Battaglia Terme Offices &  
Workshop

Tot. Surface: 75.000 m<sup>2</sup>  
(40.000 m<sup>2</sup> in-house)

Latina Offices &  
Workshop

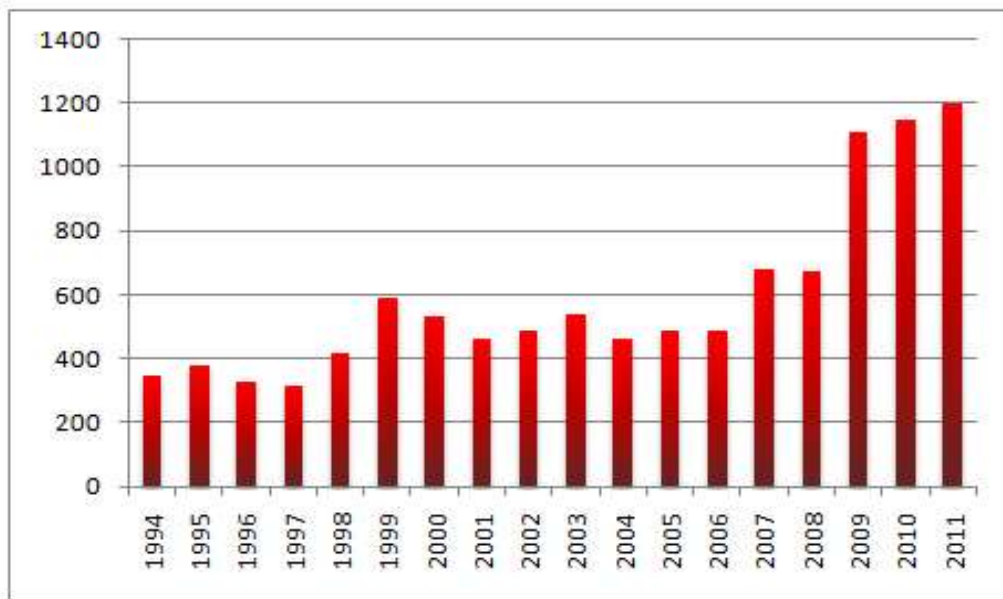
Tot. Surface: 43.115 m<sup>2</sup>  
10.000 m<sup>2</sup> in-house)

Augusta Offices &  
Warehouse

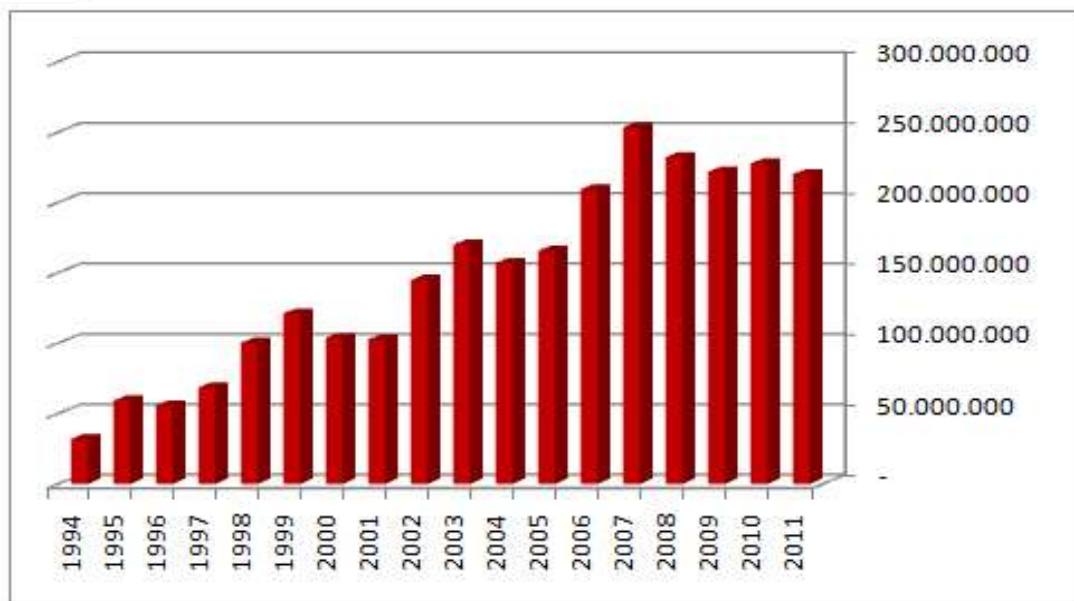
Tot. Surface: 7.000 m<sup>2</sup>  
1.400 m<sup>2</sup> in-house)



# Employees...



## ... and Turnover



# Certifications ISO 9001:2008

14001:2004

18001:2007



## Fields of activities

“Acquisition, management and implementation of EPC (Engineering, procurement, construction, installation, commissioning and maintenance) contracts related to: civil and industrial buildings and related finishings, technological plants (thermal-fluid and electrical-electronic), fluid distribution networks, chemical, petrochemical, and petroleum plants, energy production, transformation and distribution plants. Technological development, design, manufacture, installation, commissioning and maintenance of steam generators, furnaces for chemical, petrochemical and metallurgical plants, pressure components and structural works. Production of insulated panels for naval and civil furnishings. Design, construction and assembly of toilets, doors, furnishings and components for the naval and civil sectors. Design and development of parts for naval and civil furnishings. Development of technical activities to obtain certification and approval of fire resistance of materials and barriers”.



Demont is OIMS certified according to Exxon Mobil requirements

# Our Sectors of Activity

**Complete ERECTION activities:  
mechanical & electro-  
instrumental**



**Design & manufacturing  
of steel components**





# Our Sectors of Activity

## Design, supply & installation of HVAC systems



## Design & production of RFG components



# Our Sectors of Activity

## Maintenance activities



## Large site constructions





# Our Sectors of Activity

## Demolitions, insulations & asbestos removal



## Outfitting

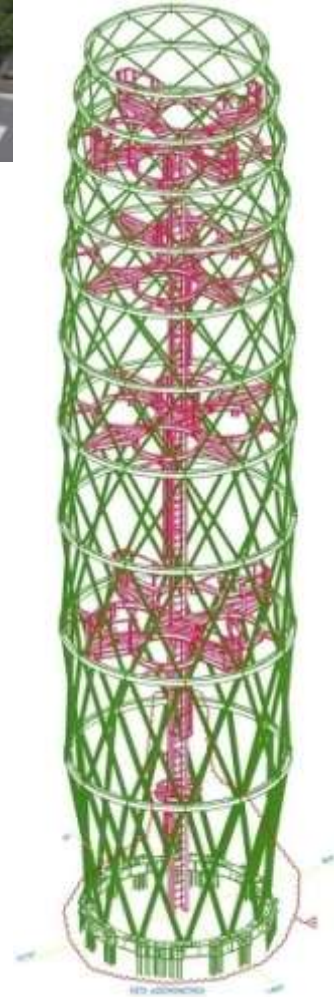




# Design activities

**More than 100 Engineers involved in:**

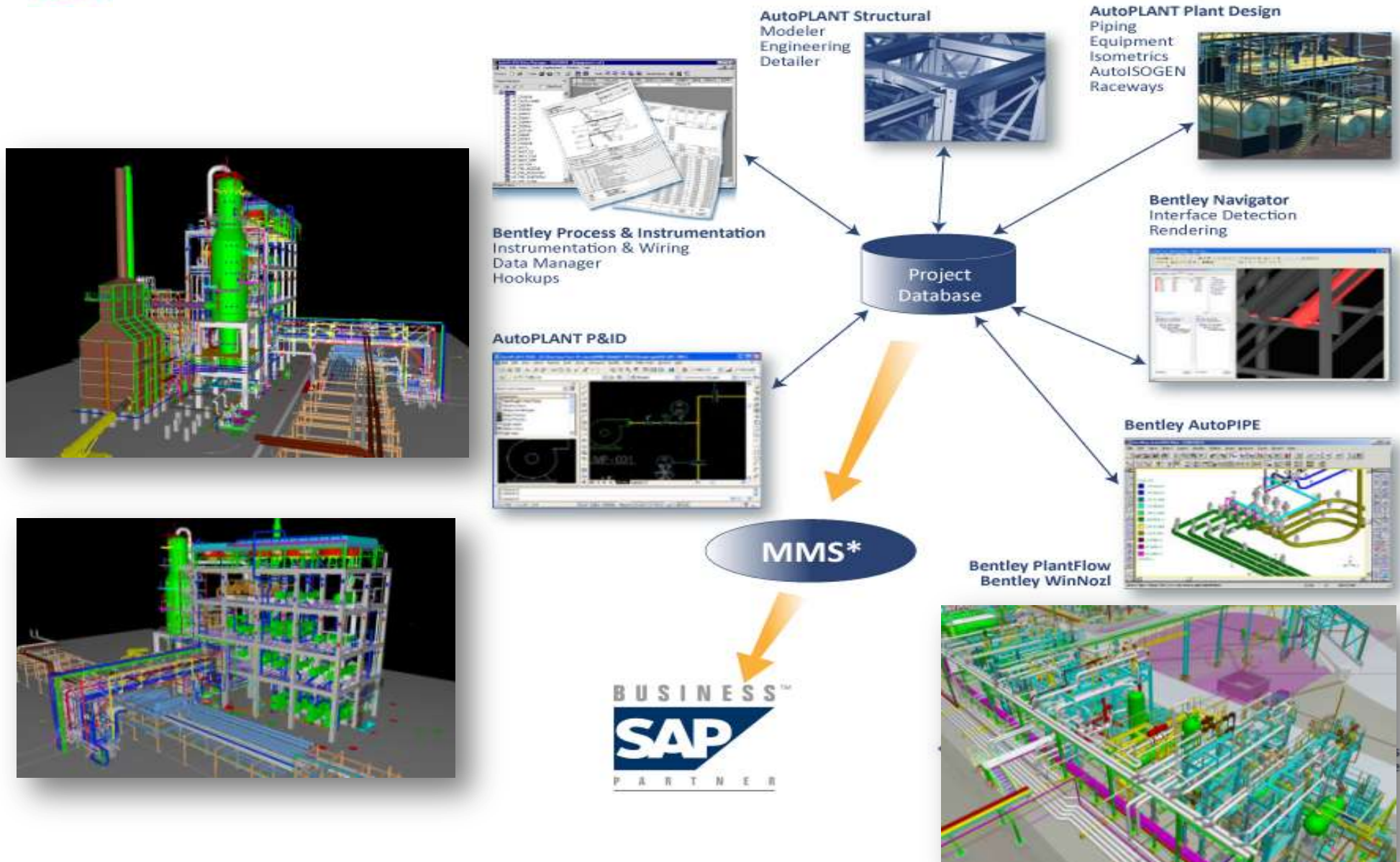
- **Mechanical and Structural design**
- **Equipments and piping design**
- **Process, Control and Instrumentation systems design**







# Integrated design







# Manufacturing activities

**Design & supply of structural steel works and steel components**





# Manufacturing activities

## Design & supply of boilers, heaters, vessels







# Construction activities

## Large site works







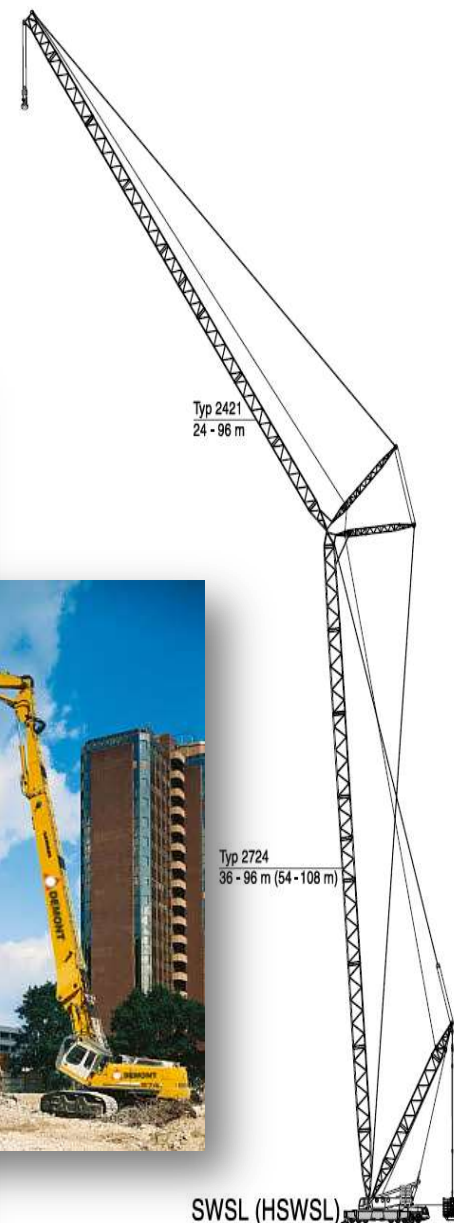
# Crane rental and lifting services





# Crane fleet

**The crane fleet of Demont is one of the most complete for heavy lifting capacity (more than 160 units)**







# Design and Construction Management

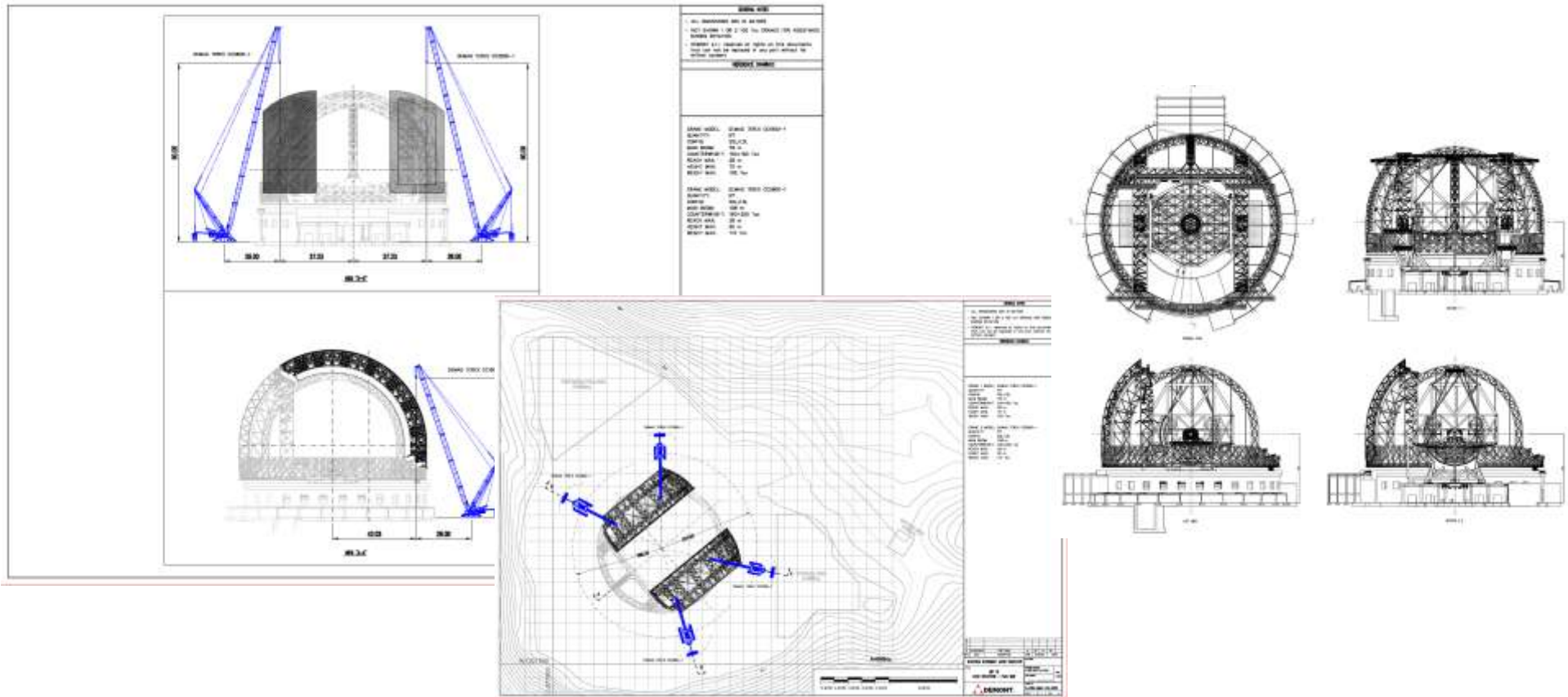






# Design and Construction Management

**ESO** | On-site Construction Management Proposal Preparation for the E-ELT Dome and Main Structure (Contract N° 29555/09/2884/HNE)





# Air conditioning and ventilation systems

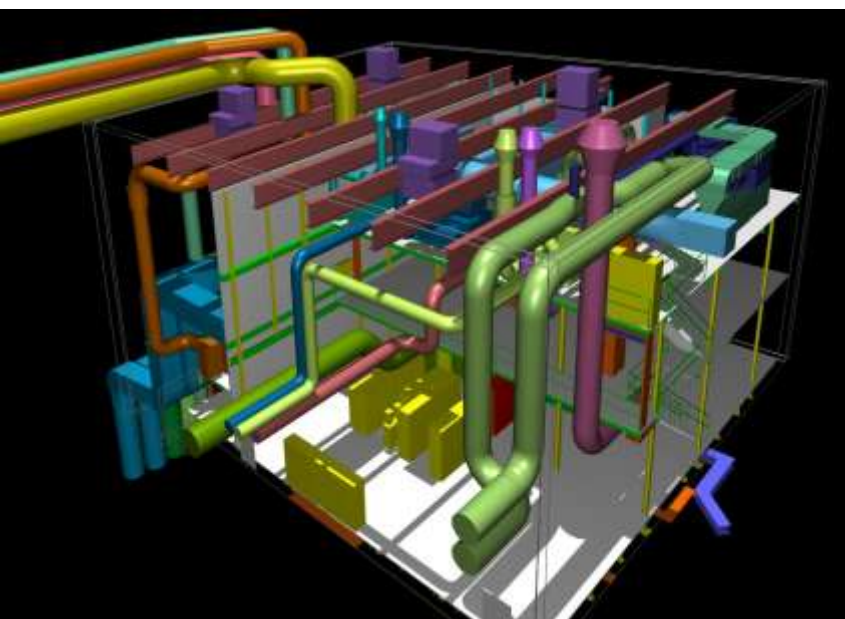




# Air conditioning and ventilation systems

Design, supply , installation and commissioning of HVAC systems in:

- **NAVAL applications**
- **CIVIL – INDUSTRIAL & RESEARCH CENTRES applications**
- **HOSPITALS**



**Size of a typical HVAC system for a naval application:**

Air conditioned flow rates: in excess of 1.800.000 m<sup>3</sup>/h

Number of AHU: more than 100 - 150

Chilling machineries power rates: in excess of 8.000 KW each

Air Ducts volumes: more than 1.500.000 KG





# Air conditioning and ventilation systems

## CERN Genève (Switzerland) | HVAC System and chilled water production systems

Turnkey supply of Heating, Ventilation, Air Conditioning and chilled water plants related to the installations ATLAS and CMS of the LHC project in the CERN laboratories (points 1 and 5) in Genève.





# Air conditioning and ventilation systems

**Cruise ships** | HVAC and chilled water production systems



**Since early '90 Demont has supplied more than 60 complete HVAC systems on board of cruise ships**



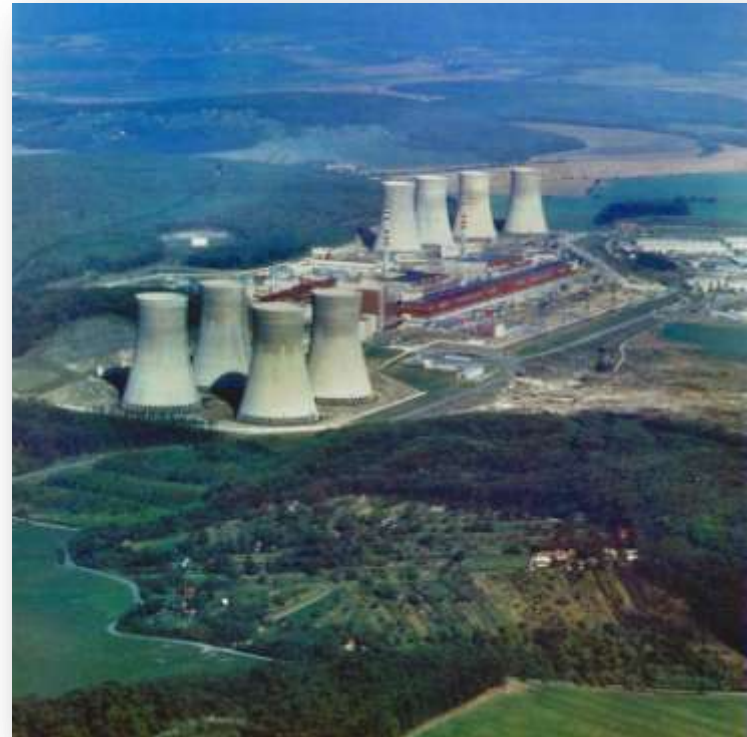


# Air conditioning and ventilation systems

## HVAC | Mochovce Nuclear Power Plant

### Turn key supply of Air Conditioning and Ventilation System of Unit 3 & 4

Air Conditioned Flow Rate:	868.284 m <sup>3</sup> /h
Number of Units:	98
Cooling Capacity :	4085 kW
Heating Capacity :	3865 kW
Ducts:	150.000 kg
Piping:	110.000 kg





# Air conditioning and ventilation systems

## HVAC | Scarabeo 8 - Semi-Submersible Drilling Rig

Turn key supply of air conditioning and ventilation system

### Accommodation

Air Conditioned Flow Rate:	90.000 m <sup>3</sup> /h
Number of Units:	5 (2 Stand-By)
Chilling Machinery (1 Running, 1 Stand-by)	1.050 kW each
Reheating Capacity (Hot Water)	750 kW
Ducts:	50.000 kg

### Platform

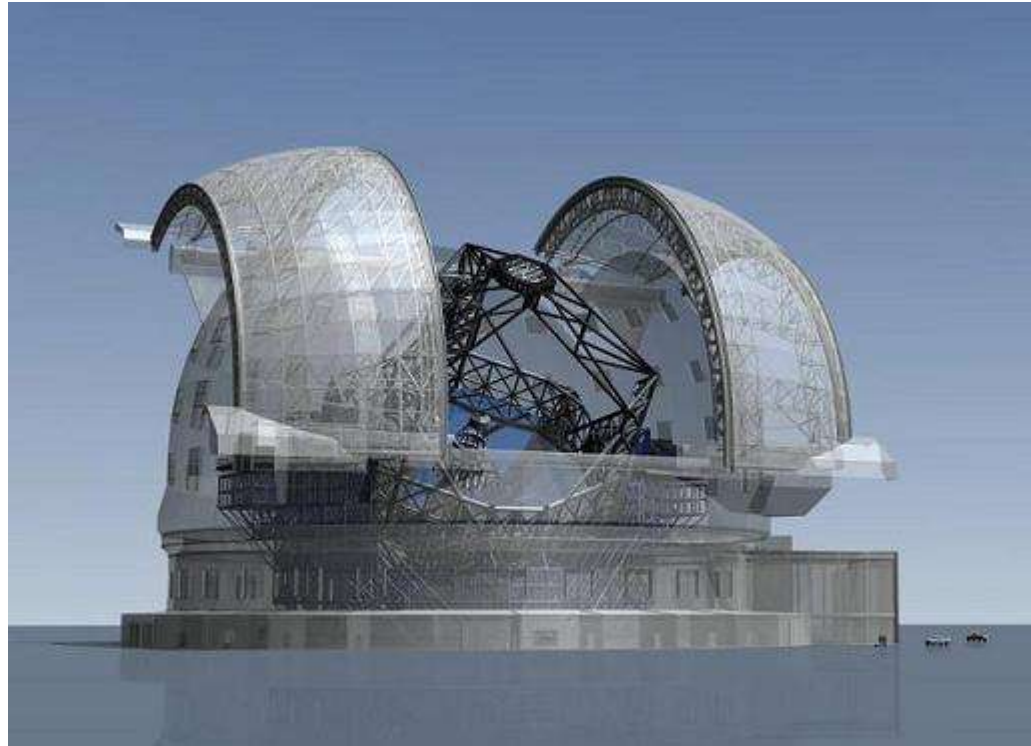
Air Conditioned Flow Rate:	90.000 m <sup>3</sup> /h
Number of Units:	18 (2 Stand-By)
Air Ventilated Flow Rate:	1.730.000 m <sup>3</sup> /h
Number of Units:	126 (18 Stand-By)
Chilling Machinery (1 Running, 1 Stand-by)	600 kW each
Reheating Capacity (Hot Water)	7.250 kW
Ducts:	140.000 kg







# **...in the design and construction of the E-ELT Dome and Telescope Main Structure**



**...DEMONT is the partner you need**