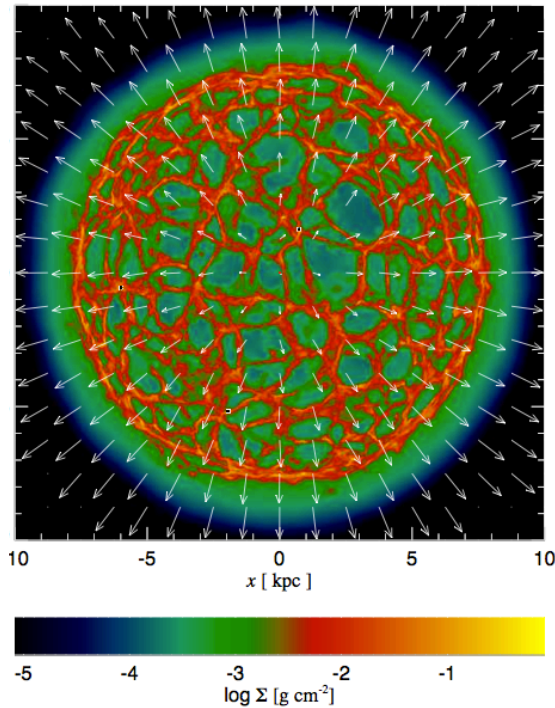
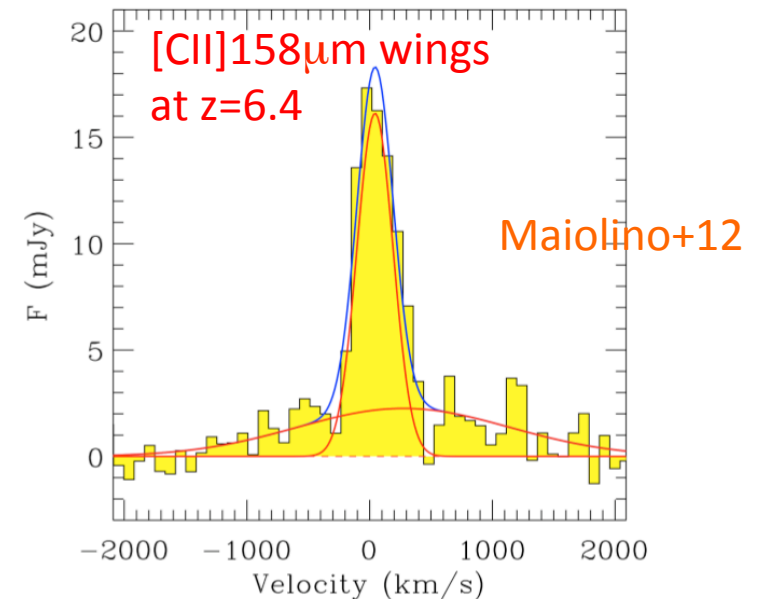


Very difficult to trace star formation in a quasar-driven outflow



- Needs a spectroscopic tracer
- Needs extinction-free tracers
- Needs diagnostics capable of disentangling from quasar excitation

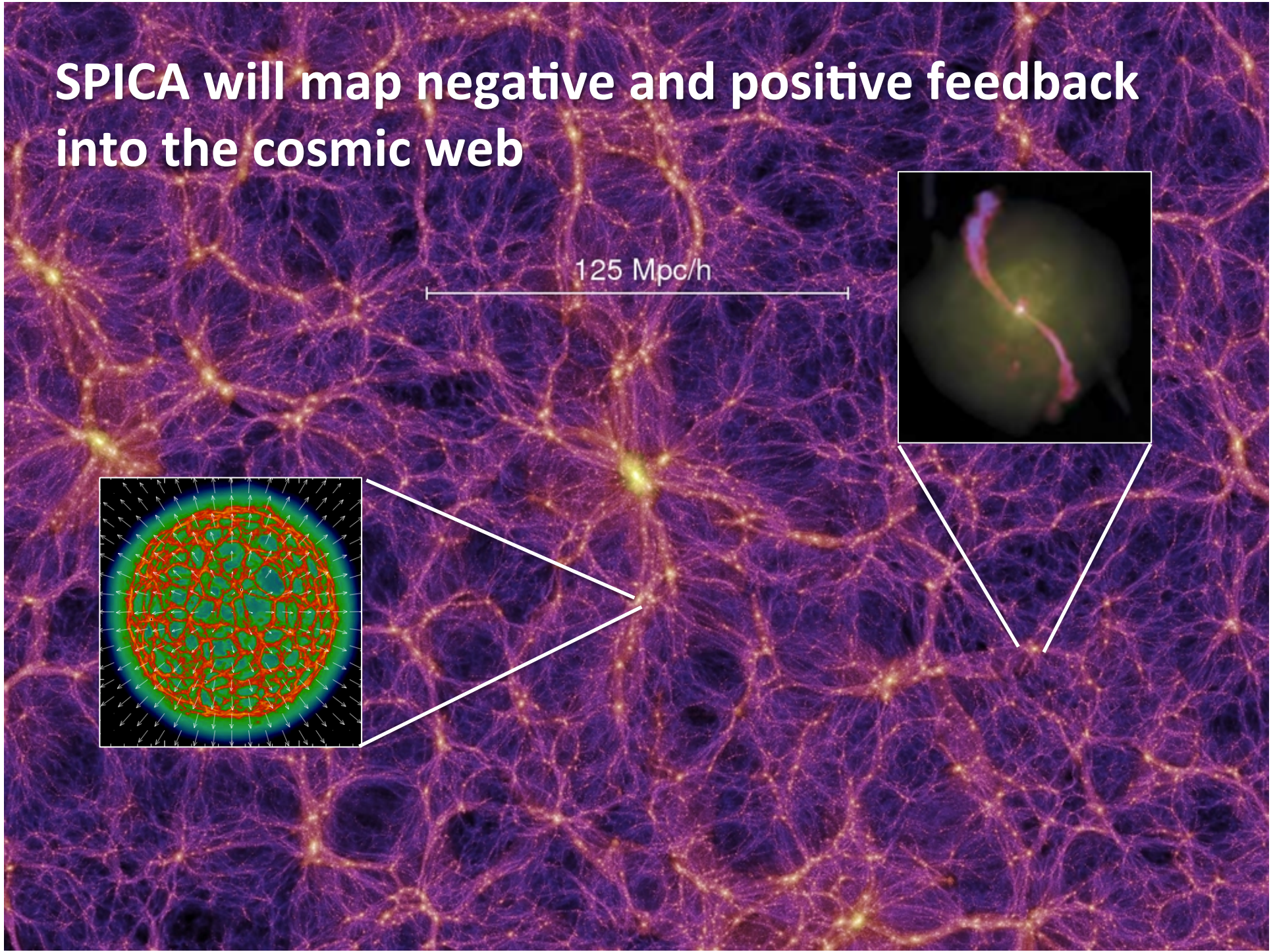
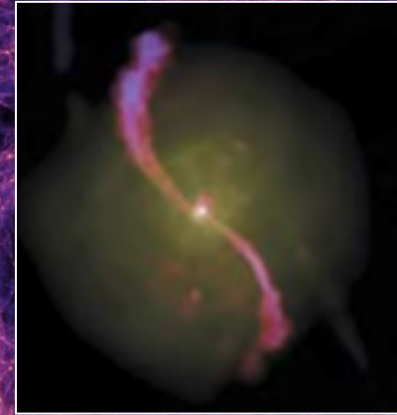
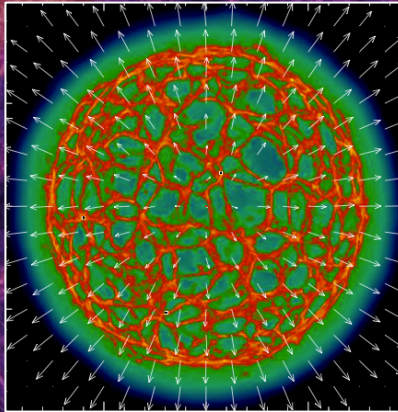
Hint of star formation
in quasar-driven
outflow at $z \sim 6.4$



SPICA: probably the only facility capable of clearly revealing the “third mode” of galaxy formation by tracing star formation in outflows through mid/far-IR lines in large samples

SPICA will map negative and positive feedback into the cosmic web

125 Mpc/h



Looking forward for the the MIR and FIR version
of SDSS and zCOSMOS...

