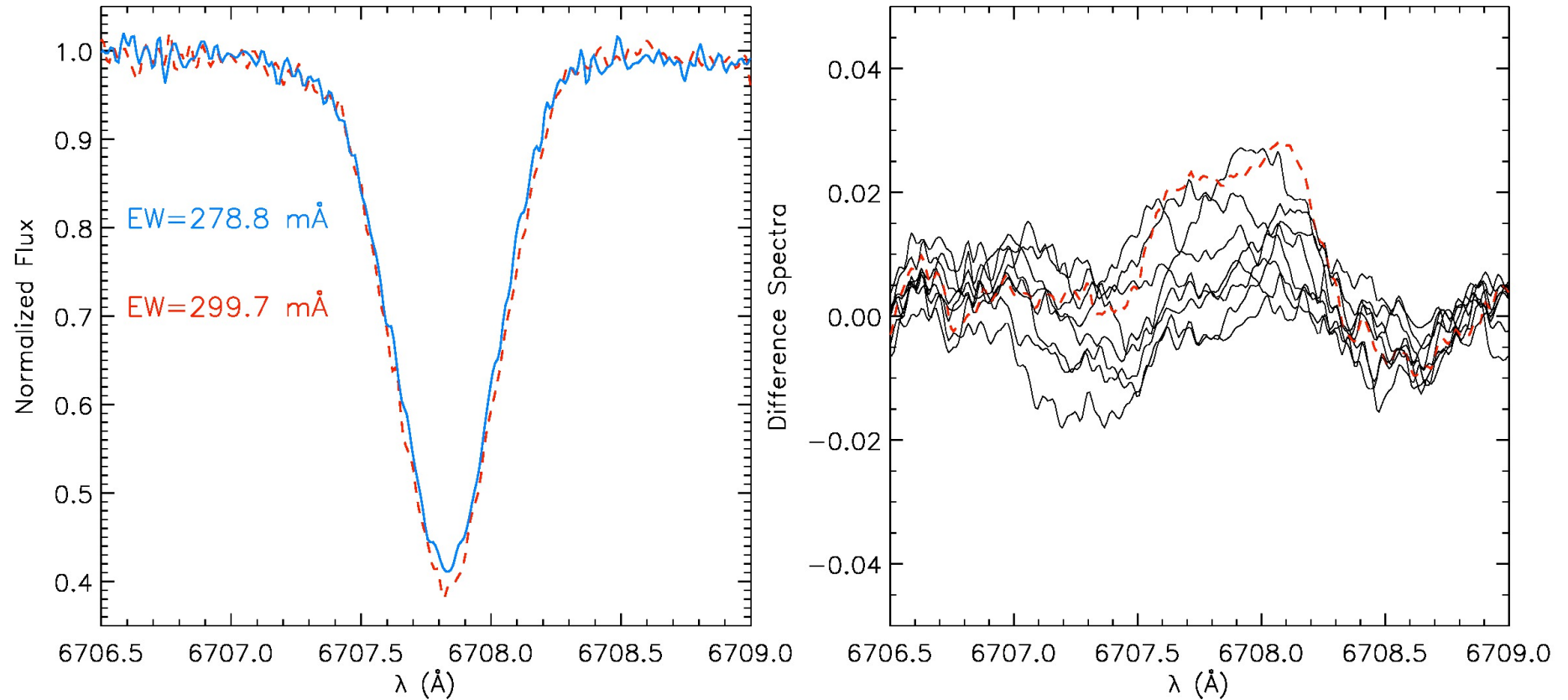


Li vs. magnetic activity

AB Pic

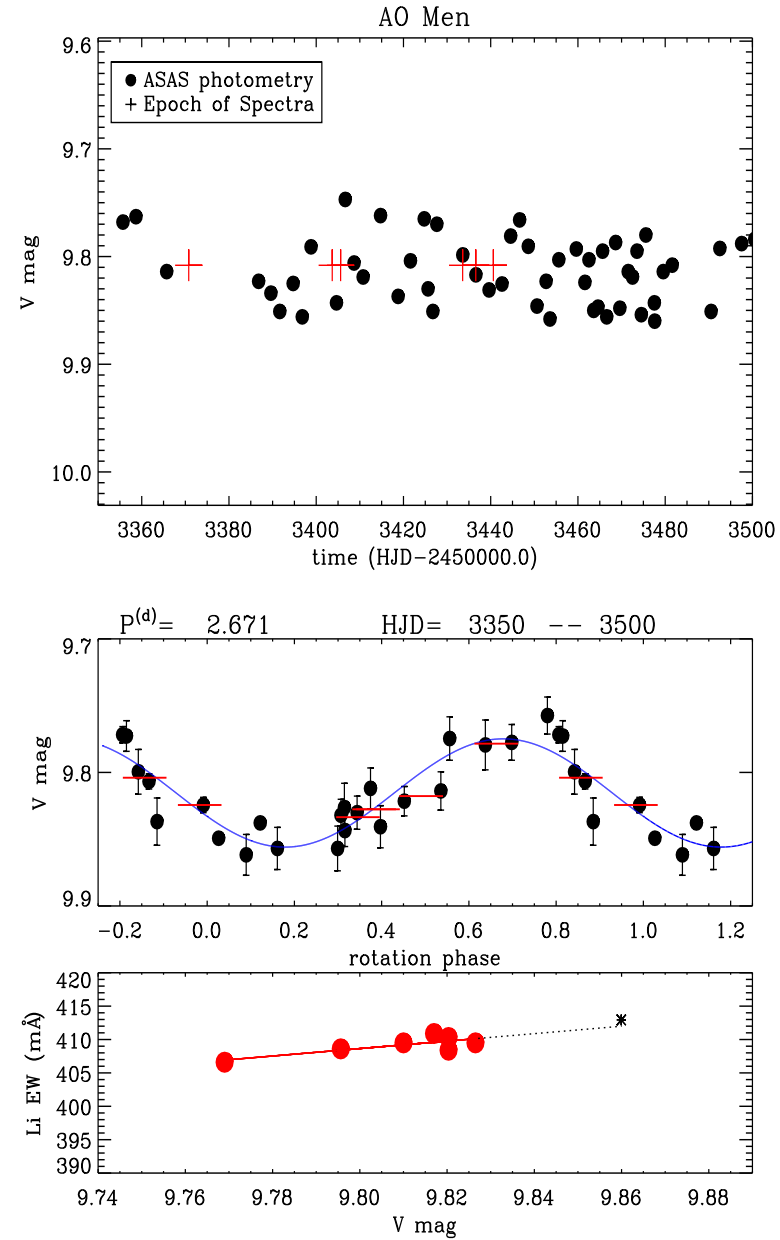


Messina et al. in preparation

Li vs. activity

Constraining surface
inhomogeneities effects

Messina et al. in preparation



Gaia CU7: Special Variability Detection

Quick detection of
solar-like activity in a
large time-series
database

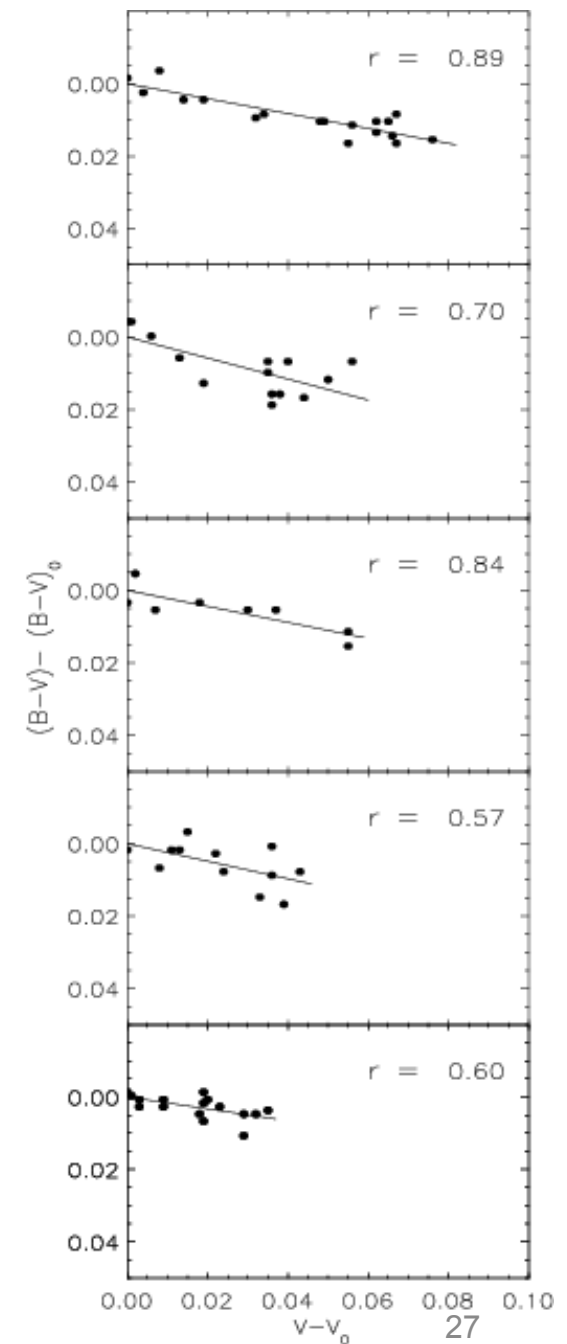
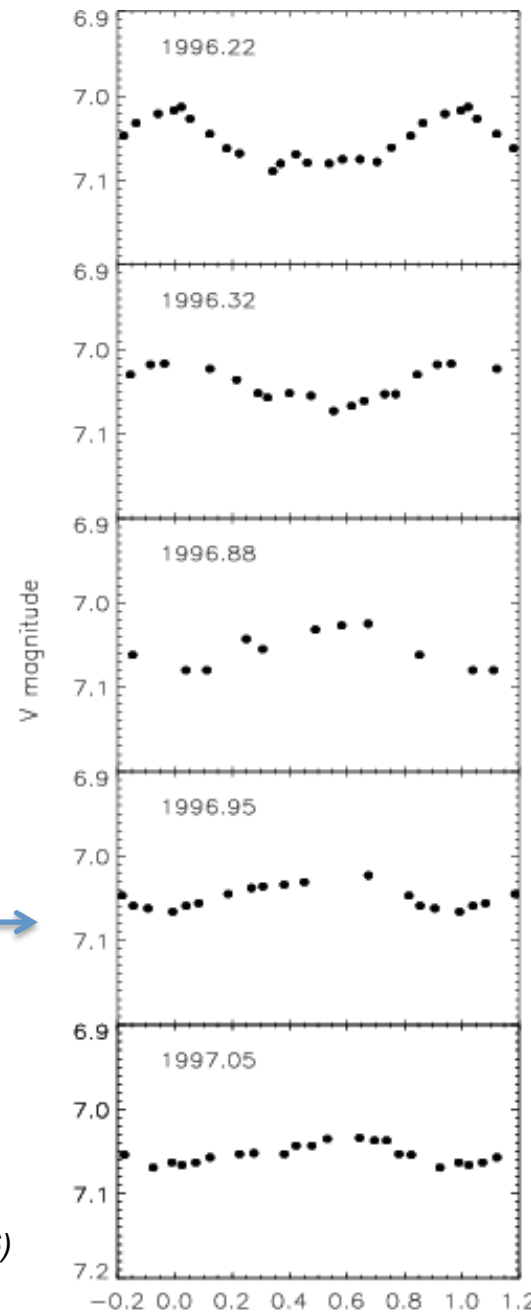
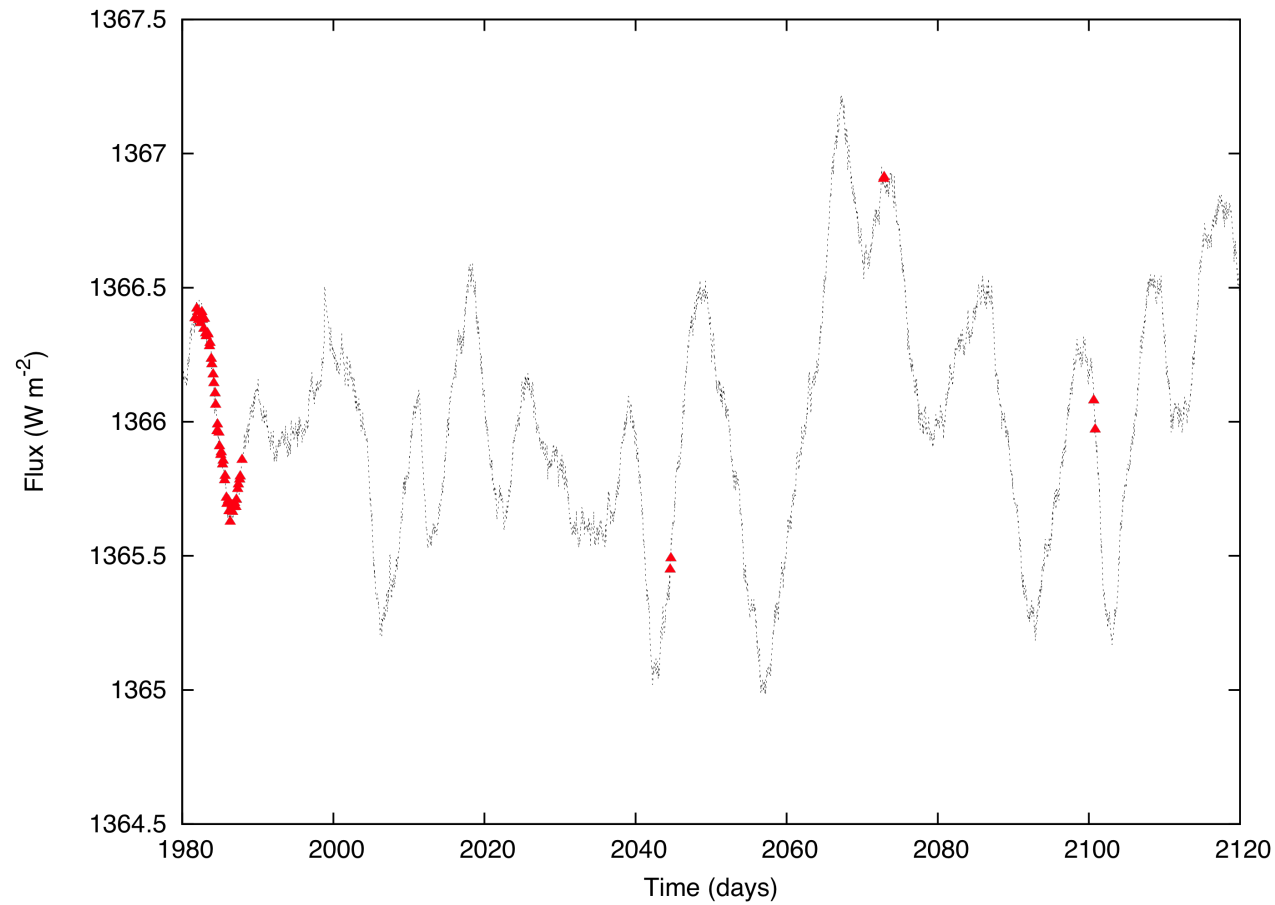


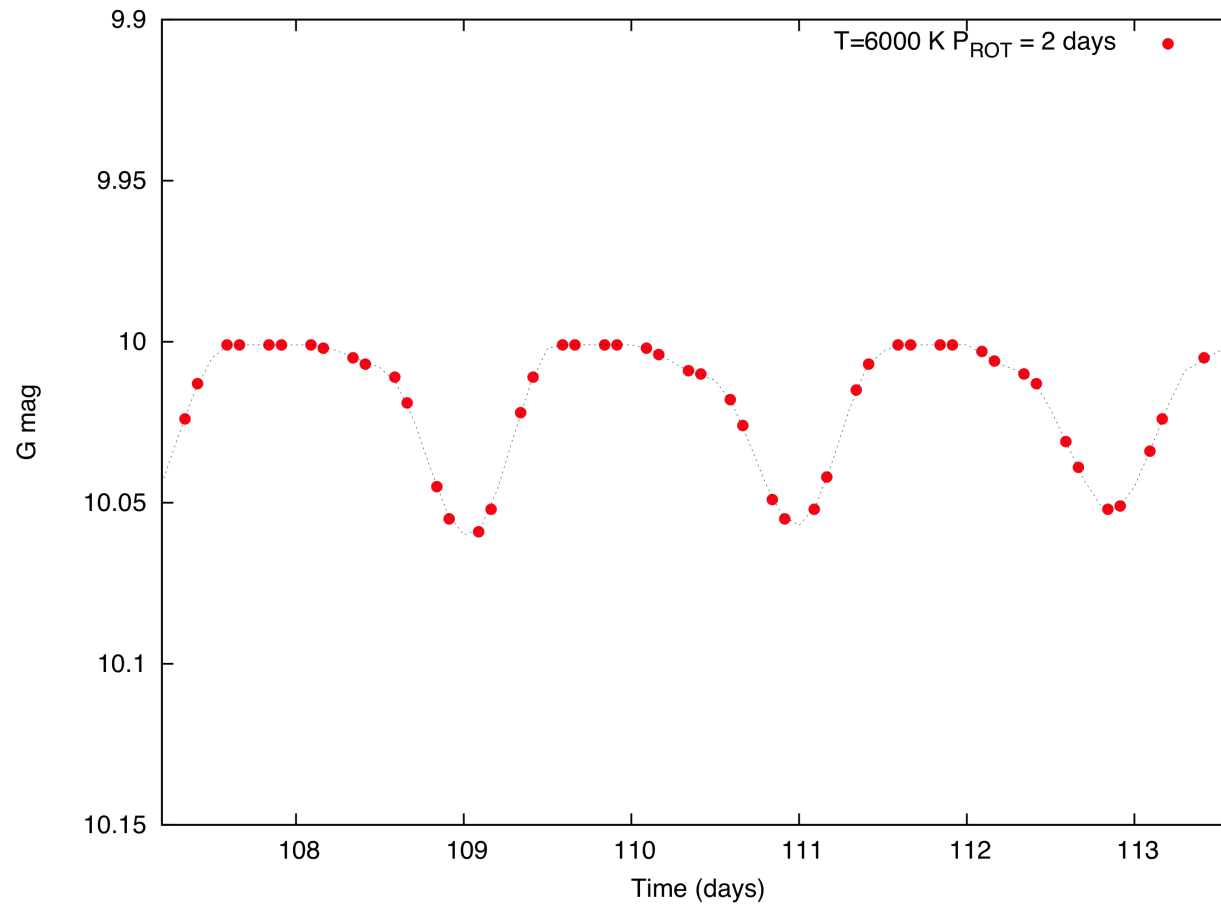
Figure from Messina et al. (2006)

Gaia CU7: rotational period recovery



Distefano et al. (2012)

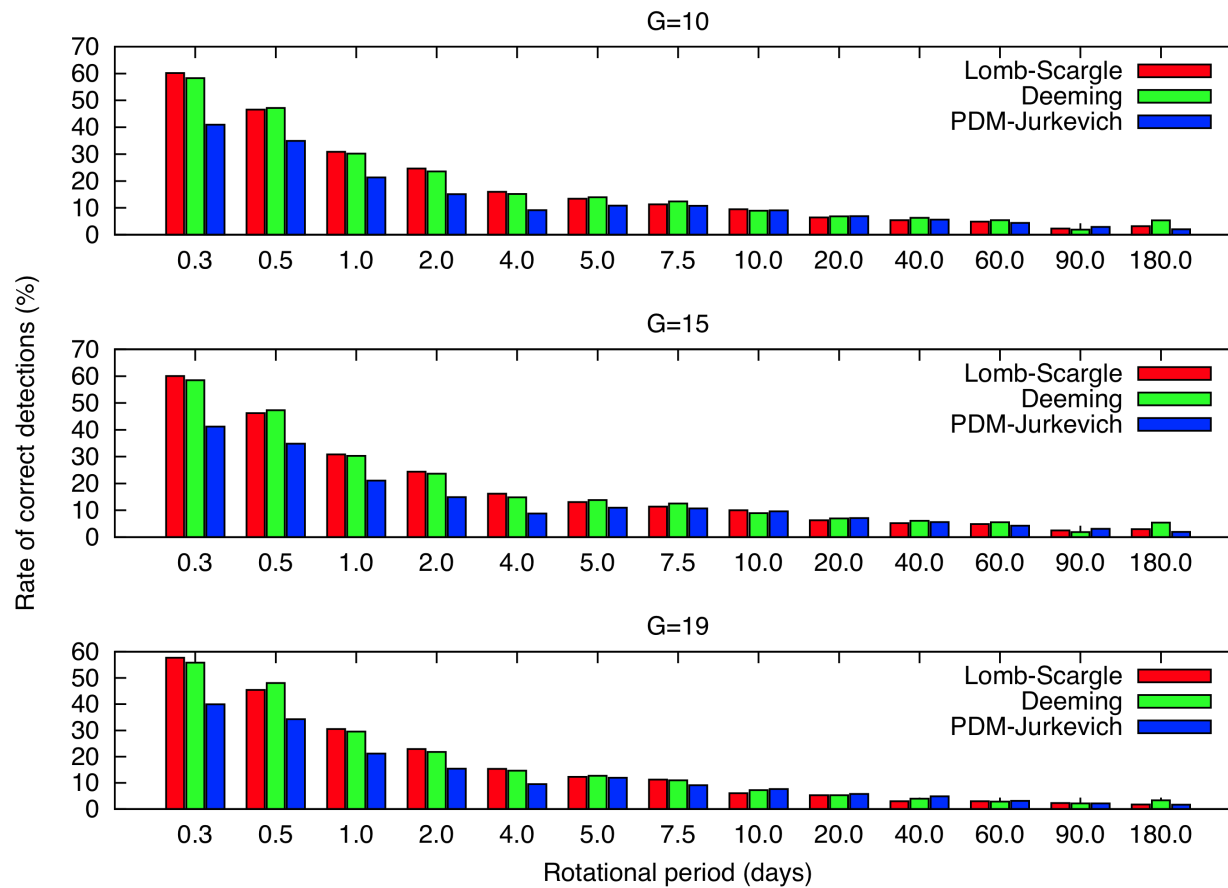
Gaia CU7: period recovery



+ photospheric activity
from light-curve
amplitude

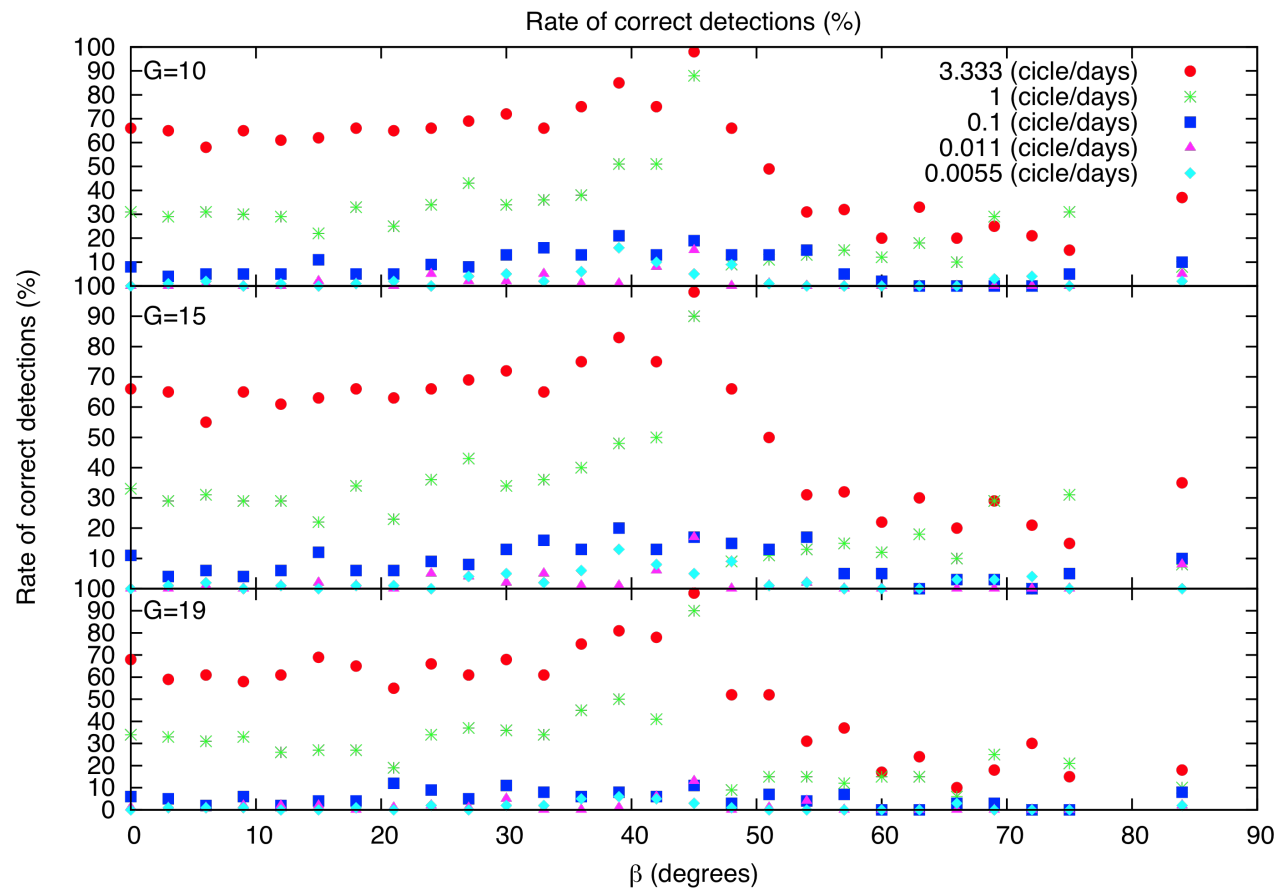
Distefano et al. (2012)

Gaia CU7: rotational period recovery



Distefano et al. (2012)

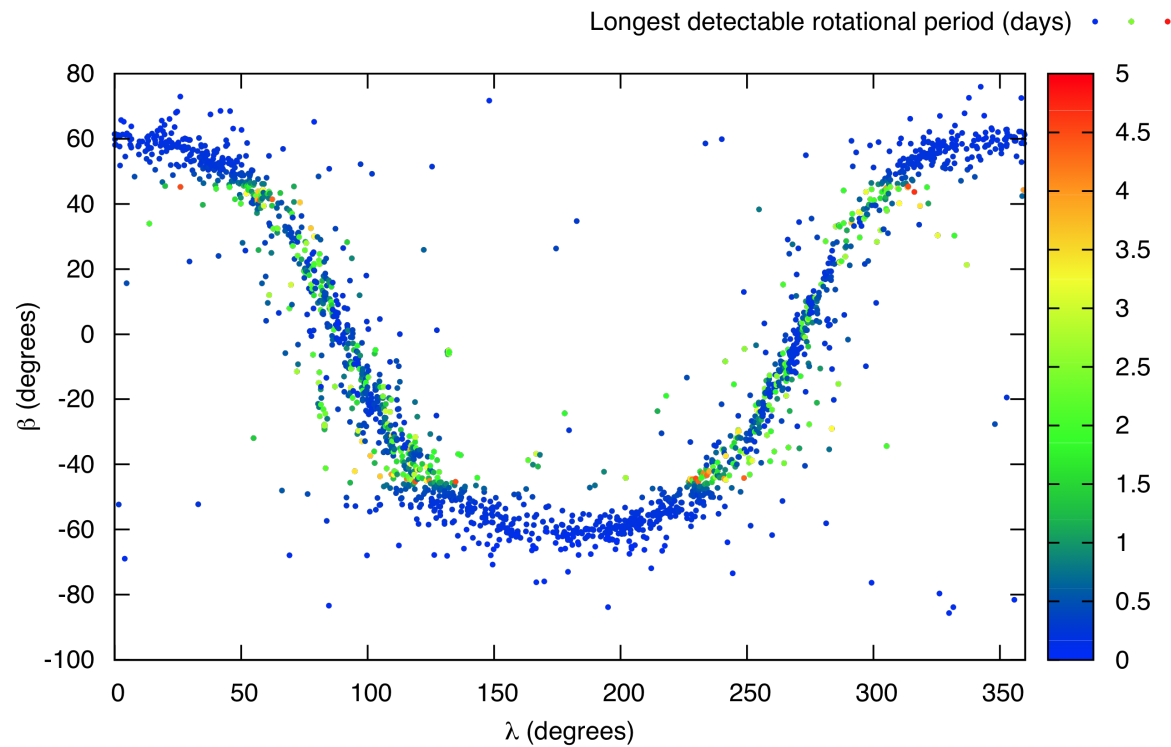
Gaia CU7: rotational period recovery



Dependence on
ecliptic coordinates

Distefano et al. (2012)

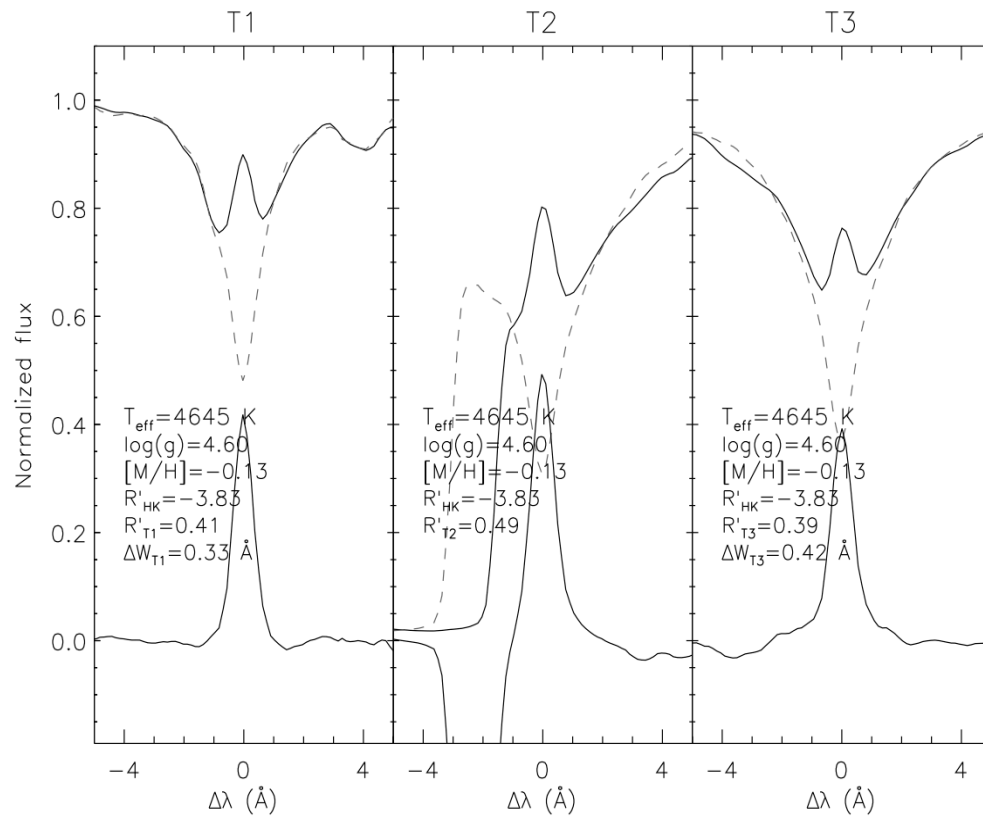
Gaia CU7: rotational period recovery



Detection in open clusters

Distefano et al. (2012)

Gaia CU8: chromospheric activity from CaII IRT

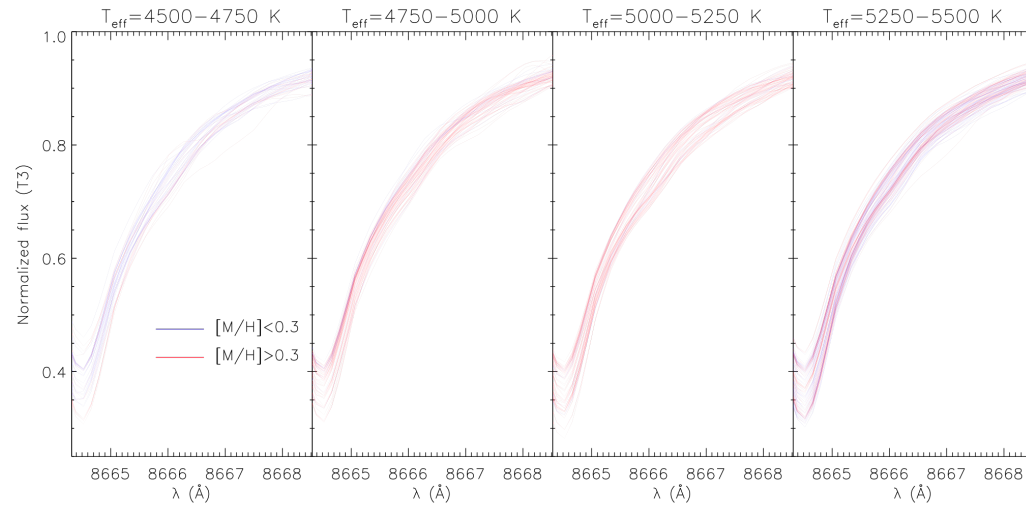


Vast uniform database

Replace existing ones

Legacy value

Gaia CU8: chromospheric activity from Ca II IRT



Basal flux problem

Calibration with Ca II H&K

